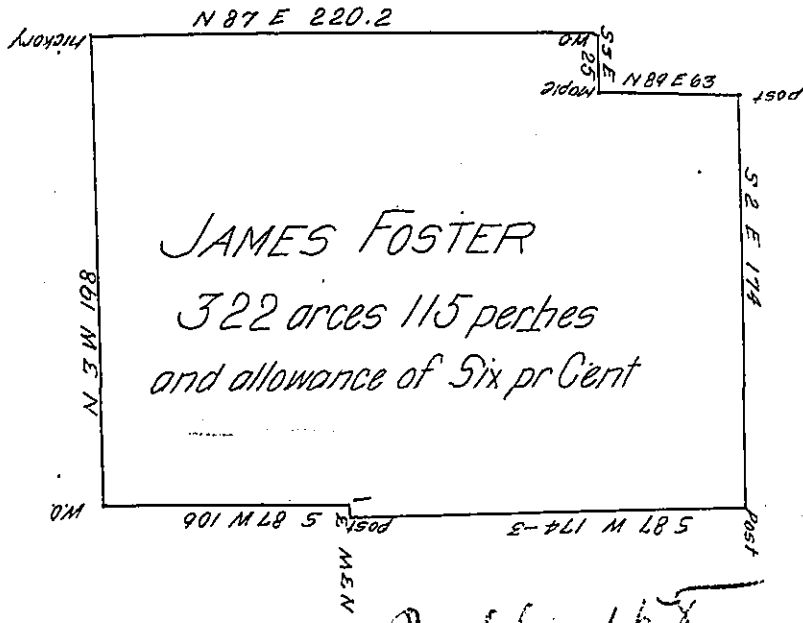


James George C 65-297

N 87 E 220.2
 S 3 E 25
 N 89 E 63
 S 2 E 174
 S 87 W 174-3
 N 3 W 3 C 134-190
 S 87 W 106
 N 3 W 198



C 223-116

Daniel Stuart

Pellsburg Academy Land

B. 17-140

C. 66-158

Hugh Foster

The above is a draft of a tract of land Situate in Wolf creek Township in Mercer County Containing three hundred and twenty two acres and 115 perches with the usual allowance of Six per Cent for roads &c Surveyed the tenth day of November 1827. In pursuance of a Warrant granted to James Foster the ninth day of August A.D. one thousand eight hundred and twenty seven, and bounded as above described.

Given under my hand this 23rd day of November A.D. 1827.

A. Brown. D.S.

To Gabriel Hiester Esq. }
S.G.

Mercer County

IN TESTIMONY that the above is a copy of the original remaining on file in the Department of Internal Affairs of Pennsylvania, made conformably to an Act of Assembly approved the 16th day of February, 1833, I have hereunto set my Hand and caused the Seal of said Department to be affixed at Harrisburg, this eighth day of September 1904

James R. Brown
Secretary of Internal Affairs.